

# Sabroe SAB 110 SF (x3) Screw compressor package

## Specifications

Brand	Sabroe
Type	SAB 110 SF (x3) Screw compressor package
Refrigerant	Freon
Refrigerant type	R 404 A or other types
kW at 0°C/+40°C	519
Electromotor Specs	111 kW at 2950 RPM (can be changed) (3x 37kW)
On steel base frame	✓
Pressure safety switches	✓
Hp/Lp/Op	
Liquid receiver	✓
Oil separator	✓
Sight Glass	✓
Control panel	✓
m3 / h	627/759 (3x 209/253)
Remarks	YOB comp.1 1997 comp.2 2007 comp.3 2009
Remarks	has an extra motor with 0.25 kW at 1400 RPM
Package / Rack	✓
Stock	2

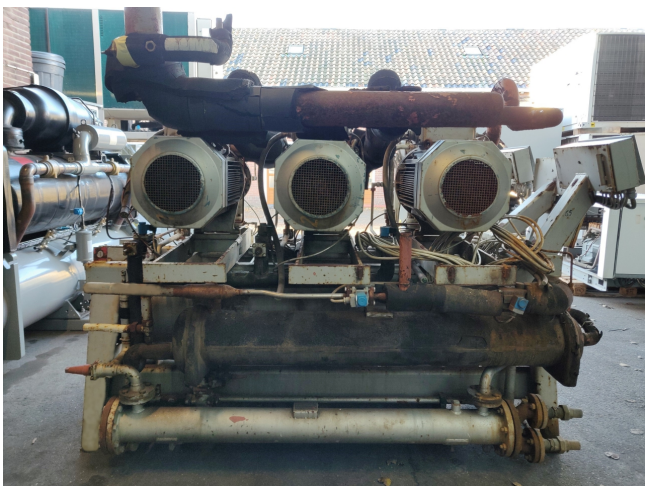
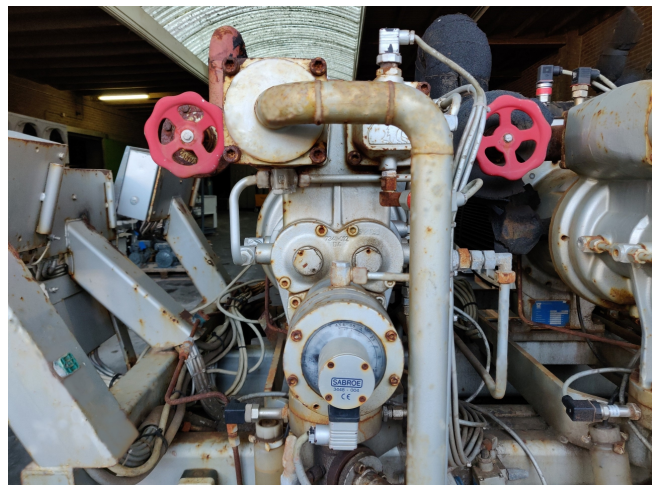


## Description

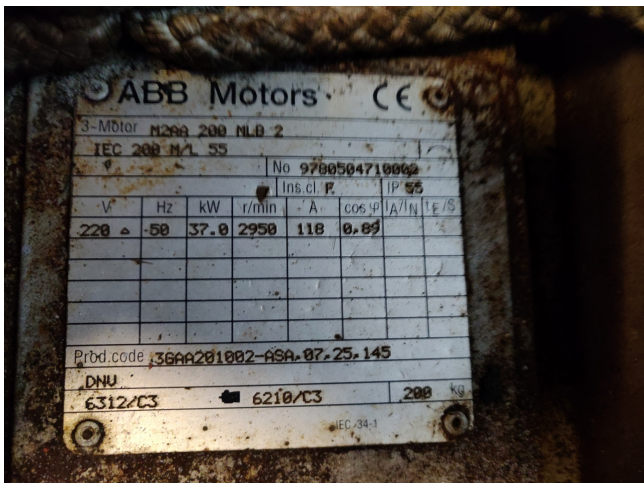
### Used Sabroe SAB 110 SF (x3) Screw compressor package

Used Sabroe SAB 110 SF (x3) screw compressor package with 3 Electromotors from 37 kW at 2950 RPM . Our capacity table is based on Freon. For all the other specs (if available), see the picture of the manufacturer model plate or the attached pdf file.  
 \*Why choose for HOSBV? Were not only the largest used refrigeration specialist in Europe, but also, we deliver all equipment including an extensive test, warranty and industrial cleaning.  
 \*Optional we can also perform a new paint job and arrange the logistics.

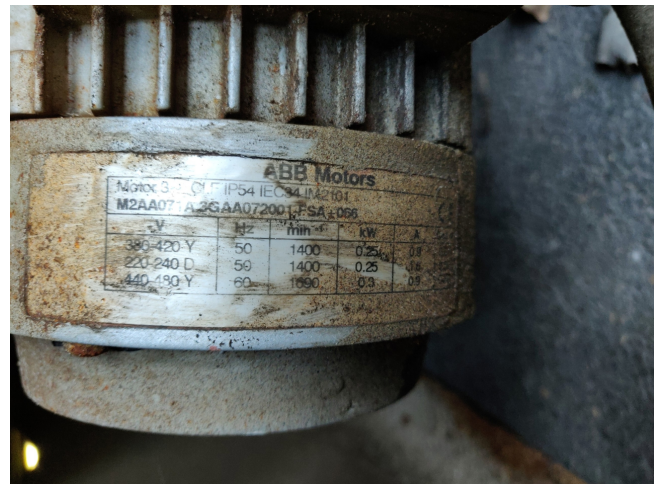












Cooling capacity in kW <sup>1)</sup>									
Model	R717		R22		R404A		With economiser		
	High stage	Booster	High stage	High stage	High stage	High stage	R717	R22	R404A
	-10/+35°C	-40/-10°C	-10/+35°C	0/+40°C	-10/+35°C	0/+40°C	-40/+35°C	-40/+35°C	-40/+35°C
SAB 110 SM	79	NA	76	103	79	107	22	28	28
SAB 110 LM	100	NA	97	130	99	135	28	35	36
<b>SAB 110 SF</b>	130	NA	124	167	128	173	36	45	47
SAB 110 LF	164	NA	156	211	161	218	46	57	59

<sup>1)</sup> Nominal, 5K liquid subcooling, 5K suction gas superheat for R717, 15K suction gas superheat for R22 and R404A.

Technical data							
Model	Swept volume		Dimensions		Weight <sup>2)</sup>	Sound pressure level <sup>3)</sup>	
	2960 rpm	3550 rpm	L	W			
	m³/h	m³/h	m	m	kg	dB(A)	
SAB 110 SM	140	168	1.9	0.9	1.3	600	81
SAB 110 LM	175	210	1.9	0.9	1.3	600	81
<b>SAB 110 SF</b>	210	252	1.9	0.9	1.3	600	81
SAB 110 LF	262	314	1.9	0.9	1.3	600	81

<sup>2)</sup> Including oil cooler. Excluding drive motor, oil charge and refrigerant charge.

<sup>3)</sup> -10/+35°C, free field, reflecting plane and off the metric distance.

Due to variations in equipment configuration, dimensions and weights are guidelines only.

All information is subject to change without previous notice.